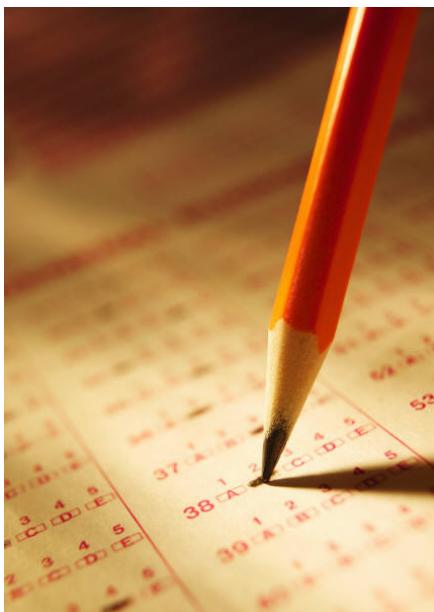




Pre-ID:

Key Data Systems' Pre-Identification service covers various California State assessments including CAHSEE, STAR, CELDT, and Physical Fitness Testing. Key Data Systems specializes in working with California assessment data and has formulated a systematic, error-resistant process for compiling your Pre-ID file.

The Pre-ID service involves the following steps:



1. Compile a profile of the data requirements for the district.
2. Obtain the district data (this typically involves the district providing Key Data Systems with a data file or files containing the required data).
3. Perform an extensive review of the data in order to ensure the data are complete, valid, and internally consistent.
4. Provide school and district level verification reports to the district in order to confirm the accuracy of the compiled data prior to submission to the testing company.
5. Submit the pre-identification file to the testing company.

